



41 Cartington Terrace, Newcastle Upon Tyne, NE6 5SE

Offers Over £250,000

Hive Estates proudly presents this spacious four bedroom terraced home on the highly sought after Cartington Terrace, right in the heart of Heaton. Perfect as a family home or an investment opportunity, this property combines charming period features with spacious, light filled rooms.

Inside, the home retains its original wood flooring throughout. The main living room is large and inviting, with a bay window that floods the space with natural light an ideal area to relax and unwind. A second reception room offers flexibility as a dining space or informal lounge, also bright and generously sized.

The kitchen is well proportioned, featuring wood effect laminate flooring, oak effect worktops, and white shaker style cabinets. It includes an integrated oven with electric hob and provides direct access to the rear yard. Completing the downstairs accommodation is a full bathroom with a shower over bath, basin, WC, and towel radiator.

Upstairs, you'll find four spacious bedrooms, all with neutral decor and continued original flooring. The fourth bedroom offers versatility as a home office or dressing room. A modern family bathroom completes the first floor, featuring neutral wall panelling, a shower over bath, and a vanity unit with built in storage.

Externally, the property benefits from a rear yard, perfect for outdoor dining and entertaining family and friends. Located close to excellent transport links, independent cafes, shops, and restaurants, this home offers both convenience and character in one of Heaton's most desirable streets.

Lounge 13'7" x 19'9" (4.15 x 6.04)

Kitchen 8'10" x 8'4" (2.70 x 2.55)

Bedroom 1 13'1" x 13'7" (4.00 x 4.15)

Bedroom 2 13'7" x 15'9" (4.15 x 4.81)

Bedroom 3 14'6" x 13'6" (4.42 x 4.14)

Bedroom 4 12'5" x 6'9" (3.80 x 2.06)

Bedroom 5 10'9" x 7'4" (3.28 x 2.25)

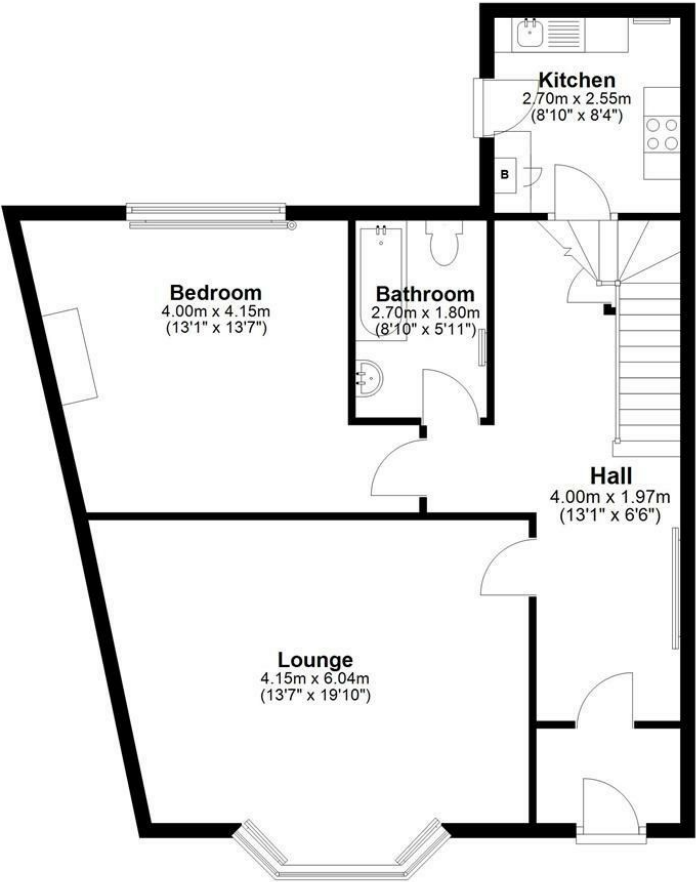
Bathroom 1 8'10" x 5'10" (2.70 x 1.80)

Bathroom 2 5'10" x 8'4" (1.80 x 2.55)

Floor Plan

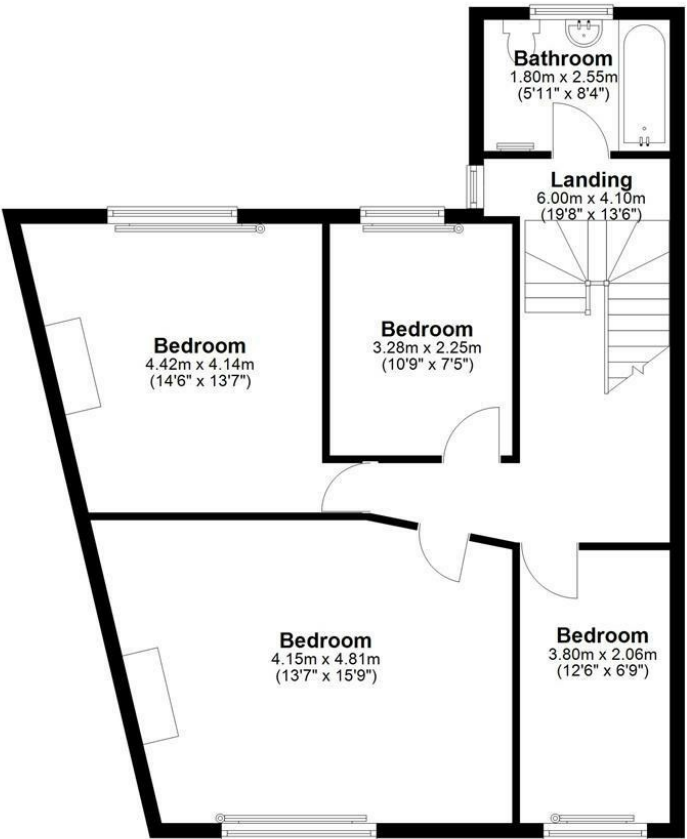
Ground Floor

Approx. 77.4 sq. metres (833.4 sq. feet)



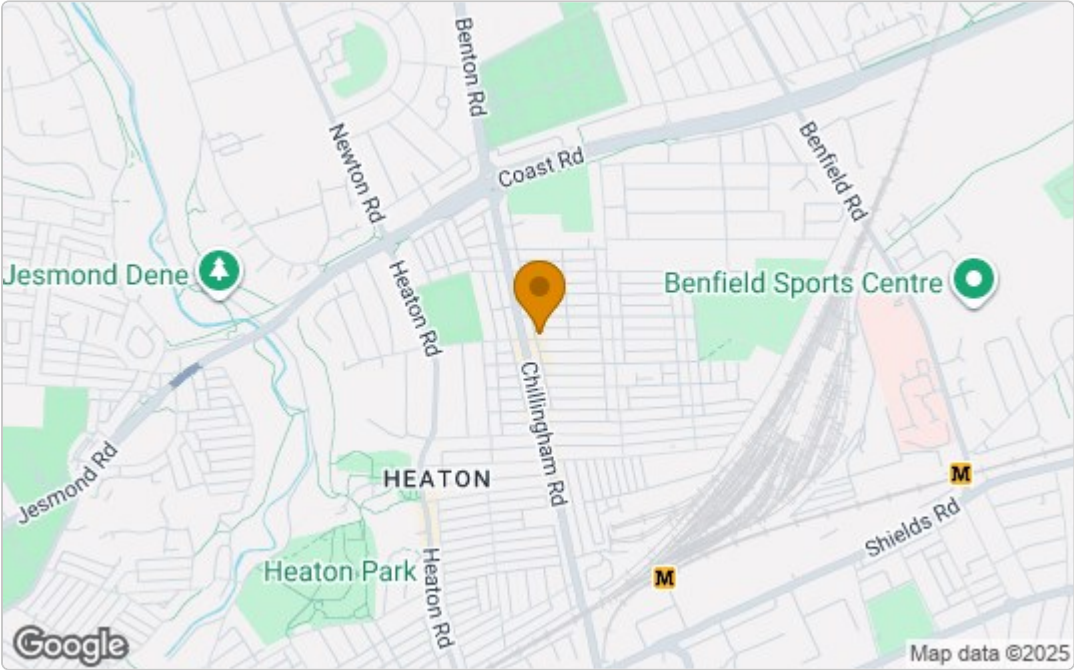
First Floor

Approx. 71.5 sq. metres (769.6 sq. feet)

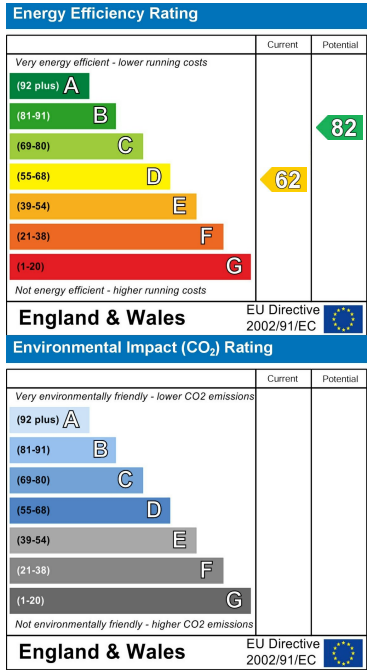


Total area: approx. 148.9 sq. metres (1603.0 sq. feet)

Area Map



Energy Efficiency Graph



These particulars, whilst believed to be accurate are set out as a general outline only for guidance and do not constitute any part of an offer or contract. Intending purchasers should not rely on them as statements of representation of fact, but must satisfy themselves by inspection or otherwise as to their accuracy. No person in this firms employment has the authority to make or give any representation or warranty in respect of the property.